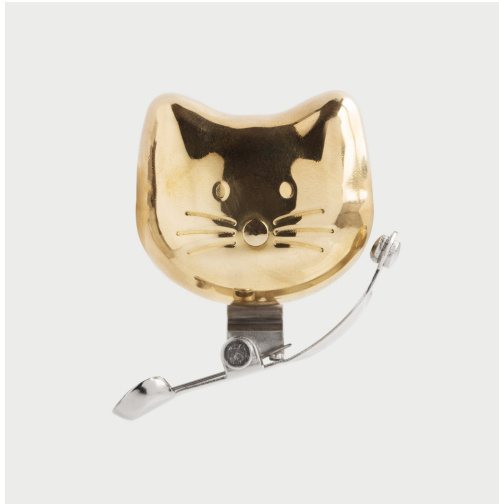




Cat Bike Bell



Simple brass bell with cat-titude.

- A traditional brass bike bell with cat detailing
- Small and compact with a sprung thumb lever
- Measures 52mm(W) x 46mm(H) x 40mm(D)

There's no substitute for a good old-fashioned bicycle bell when you really want other people to get out of your way. The Cat Bike Bell uses centuries old, tried and trusted technology - A compact brass bell with a sprung thumb lever. Good and loud and guaranteed to startle even the most oblivious dog walker. Warn other road users before cat-astrophe strikes! A great gift for feline obsessed cyclists - you know who you are!

Designed and made by Suck UK

SUCK UK LTD

<https://www.suck.uk.com/products/kitty-bike-bell/>

Camden Park Studio, Camden Park Road, London NW1 9AY



Cat Bike Bell

An idea by Suck UK Design Team
made by Suck UK



Mark E Smith once said "if it's me and your granny on bongos, it's the Fall". It's a lot like that here - if it's Sam & Jude and a revolving team of talented creatives, it's Suck UK. From the inception of the company in 1999 Sam & Jude have been the constant driving creative force, but none of that would be possible without a great team of designers and developers who turn these ideas into something great. Once a Sucker always a Sucker.